

RX-807

Unijunta®

30' SETTING

Suitable for filling joints between plasterboard sheets.
Ultra fast setting.



UNE13963
3B RÁPIDO
Q1-Q4

**COATED**

BY ALL TYPES OF CONVENTIONAL NON-RESILIENT PAINTS
AFTER COMPLETELY DRYING

CLASSIFICATION ACCORDING TO STANDARD
UNE-EN 13963

3 B FAST

QUALITY LEVEL 4 (Q4)

INTERIOR

**USES**

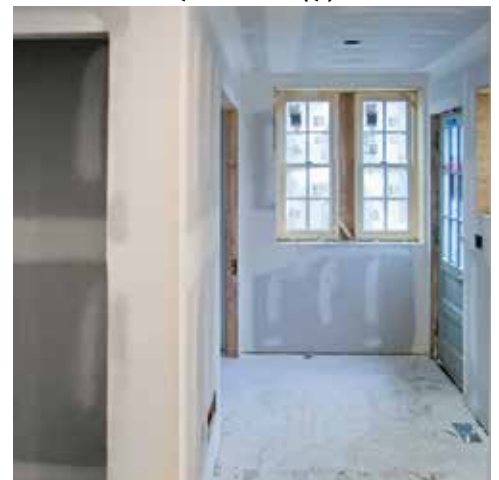
Plasterboard sheets.
Surfaces must be sound, dry, cohesive, absorbent, well adhered, clean and free of dust.

CARACTERÍSTICAS

- Great finesse and quality finishes.
- Excellent workability.
- Easy to smooth and sand.
- Excellent adhesion.
- Great filling power.
- Ultra fast setting.
- Quick dry in thin layer.
- Storage: 6 months inside its original packing and kept free from damp and humidity.

IDEAL FOR

- Filling joints between plasterboard sheets merging paper or fibre tape.
- Repairing small flaws such as lines, dents and scratches on plasterboard sheets.
- Thin layer complete rendering of the plasterboard sheets (Q4 finish).



Pallet of 66
sacks of 15 Kg.



Pallet of 35
cases of 4 x 5 Kg.

**Water for mixing**

0,45 – 0,50 litres of water per kg of powder

**Performance**

250 - 300 g/m²/mm



6.5 - 7.5

**Maximum thickness for joining**

10 mm

**Adhesion**

> 12 Kg/cm² on concrete

**Fire Classification**

A1

**Useful life**

30' approx.

**Drying Time in 1 mm thickness**

Plaster: 1 H 30' - 2 H

**Maximum Granulometry**

300 Microns