

PX-13

Imper

## WASH-IMPER WATER-BASED TRANSPARENT

Water-based water-repellent and oil-repellent waterproofing, ideal for waterproofing horizontal surfaces (terraces) and vertical surfaces (façades).



### INFORMATION ON DIRECTIVE 2004/42/CE

CATEGORY h1, CONSOLIDATING PRIMERS, WATERBASE

Limit: 50 g/l COV (2007); 30 g/l COV (2010)  
This product contains: 0,00 g/l COV max.

### SURFACES

Brick, stone, cement, hollow bricks, Catalan tiles, absorbent paints, slabs, traditional absorbent and semi-absorbent masonry surfaces.

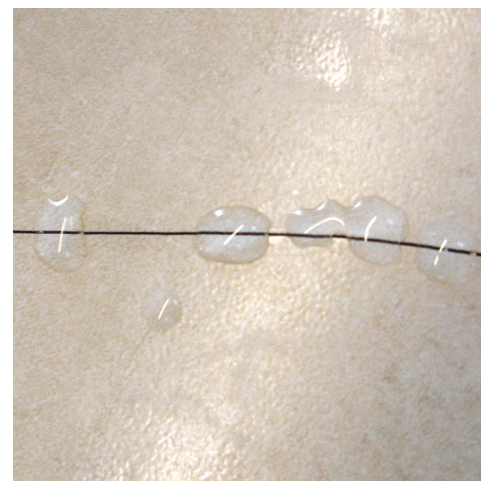
Surfaces must be sound, dry, cohesive, absorbent, well-adhered, clean and free of dust.

### CHARACTERISTICS

- Easy to apply.
- Preserves the appearance of the treated surface.
- Excellent water-repellent capability.
- It repels grease, preventing the formation of stains.
- High resistance to abrasion and traffic on foot.
- Prevents degradation of the surface due to freezing / thawing.
- Does not form a superficial film.
- Great durability.
- Invisible product.
- Anti-stain effect.

### IDEAL FOR

- Waterproofing all types of horizontal (terraces) and vertical (façades) surfaces.



# PX-13

## Imper

# WASH-IMPER WATER-BASED TRANSPARENT

## ON-SITE APPLICATION

### SURFACE PREPARATION

The surface must be sound, clean and free of any trace of saltpetre, fungi, micro-organisms, grease, release oils and, in general, any type of material that could make it difficult for the product to penetrate the surface.

Since **PX-13 WASH-IMPER WATER-BASED TRANSPARENT** does not produce a superficial film, it is essential, prior to its application, to repair and seal all the cracks, fissures or micro-cracks existing in the surface.

### CLEANING

If surfaces present traces of fungi, algae or other type of micro-organisms, we first proceed to curative treatment with our **RX-526 CLEAN ENERGY**. Apply the product to the surface to be treated and after 5-10 minutes of action clean the surface using a pressurised water machine or with a hard bristle brush.

Then, once the surface is completely dry, **RX-524 CLEAN MICRO** should be applied until the surface is completely impregnated. This preventive treatment is very effective and prevents future presence of micro-organisms.

If there are saltpetre stains on the surface to be treated, carry out an initial cleaning process with our **RX-523 CLEAN SAL**, applying the material and then scraping it with a hard bristle brush. After mechanically cleaning the surface, it will need to be rinsed with plenty of clean water in order to neutralise any **CLEAN SAL** residue that may remain on the surface.

Any grease or oil must be completely eliminated to allow the product to correctly penetrate the surface. Therefore, we recommend using **RX-527 CLEAN OIL** for the total elimination of these substances. bristle brush.

### DIRECTIONS FOR USE

Shake vigorously before using.

**PX-13 WASH-IMPER WATER-BASED TRANSPARENT** is a ready-to-use product, so its dilution is not recommended in order to keep its benefits intact.

The product can be applied by brush, roller, backpack sprayer or airless on horizontal surfaces (terraces). For the application on vertical surfaces (facades), we can use the same tools but the application on the support must always be made from the bottom up, saturating the support to prevent product from falling on the non-waterproofed surface. Ignoring the application method can cause irreversible stains on the substrate.

PX-13

Imper

## WASH-IMPER WATER-BASED TRANSPARENT

### TECHNICAL CHARACTERISTICS

Density	1.00 ± 0.07 g/ml
pH	6.5 - 7.5
Cleaning of tools	With water
Fire classification	B - s1 - d0

#### INFORMATION ON DIRECTIVE 2004/42/CE – CATEGORY h1

COV LIMIT	COV CONTENT
50 g/l (2007) – 30 g/l (2010)	0,00 g/l maximum

#### PERFORMANCE

Litre applied per m <sup>2</sup>	0,250 - 0,300
----------------------------------	---------------

### INFORMATION OF INTEREST

The manufacturing process of the waterproofing is controlled by batch, which allows traceability in the case of any incident. The quality control system used includes, the individual design and development of each article, both with the raw materials used confirming manufacturing uniformity, as well as the final product obtained. The use in our facilities of eco-technology in the manufacturing process allows the completion of environmentally friendly efficient work.

- Non-flammable product.
- Avoid the product coming into contact with skin and eyes.
- Smoking, eating or drinking in the area of use should be prohibited.
- Comply with Health and Safety at Work Executive regulations.
- Store the product in a dry place, in its original packaging firmly closed.
- Store the containers between 5°C and 35°C.
- Recommended storage time: 12 months from the date of manufacture in its original packaging and protected from moisture.

For further information on protective measures and first aid, consult the product Safety Data Sheet.

### OBSERVATIONS

- For appropriate use and correct application of the product, it is essential to first read the technical data sheet.
- The data provided in this data sheet are for guidance only and should not be considered binding. The data has been obtained in normal laboratory conditions and on standardised surfaces, and can vary depending on the conditions in which they are applied (absorption of the surface, applied thickness, temperature, environmental humidity, etc.). The intervals displayed have been shaped by measurement history. Slight deviations from the ranges presented in this technical sheet, whether higher or lower, will be accepted according to internal technical criteria and will not result in a loss of quality or affect the performance of the final product, due, among other factors, to variations in measurement conditions and the uncertainty associated with the instruments used.
- The working conditions of the users are beyond our control.
- The product must not be used for purposes other than those specified. It is recommended that the recommendations for use be strictly followed.

PX-13

Imper

## WASH-IMPER WATER-BASED TRANSPARENT

### OBSERVATIONS

- It is essential that the status of the surfaces be assessed prior to each application.
- Do not apply on surfaces whose temperature is less than 5°C or excessively hot.
- Do not mix with any material, as it will not retain its technical characteristics.
- Application temperature from 5°C to 35°C.
- Do not apply on surfaces which are oozing water. The surfaces must be completely dry for the product to penetrate deeply.
- Do not apply outdoors on days which might be rainy or frosty.
- Releplex treated surfaces cannot be repainted with water-based paints.
- The technical department of **ESTABLECIMIENTOS BAIXENS** states that the designs of recently launched new products are considered to be in an experimental phase until an annual history can be constituted. From then on, the newly designed product is considered to be fully consolidated in the market. In the meantime, **BAIXENS** reserves the right to adapt its variable specifications or working ranges according to technical criteria. The data subject to modification will be identified with an asterisk for easy identification. These may be recently created products and/or products in an experimental phase or improvements in our various ranges due to market needs and/or demands.
- We place a technical-commercial team at your disposal that will advise you on any doubts or queries.

### PACKAGING

FORMAT	5 l.	1 l.	500 ml.
UNITS/BOX	2	9	6
PALLETS	60 BOXES	48 BOXES	60 BOXES



Internal code	PX13NF1938A20
---------------	---------------



**BAIXENS**  
baixens.com

*Testing the difference*

**BAIXENS ESPAÑA**  
POL. IND. MONCARRA, S/N  
46230 ALGINET (VALENCIA)  
T.: 961.750.834  
F.: 961.752.471

**BAIXENS FRANCE**  
14, RUE DU PONT NEUF  
75001 PARIS (FRANCE)  
T.: 0.800.90.14.37  
F.: 0.800.90.20.52

**BAIXENS ITALIA / BULOVA**  
VIA PIETRO NENNI, 36  
46019 CIGOGNARA - MANTOVA (ITALY)  
T.: 0375/88181/790016 F.: 0375/88831  
www.bulova-pennelli.com

**BAIXENS PORTUGAL / ARGATINTAS**  
AVENIDA PORTAS DO MINHO, Nº 711  
4760 - 706 RIBEIRÃO,  
V.N. FAMALICÃO  
T.: 252 910 030  
www.argatintas.pt