

CX-25

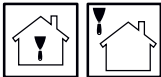
Colbaix®

PORCELANIC

High quality adhesive mortar for indoor tiling of porcelain stoneware tiles.



INTERIOR EXTERIOR

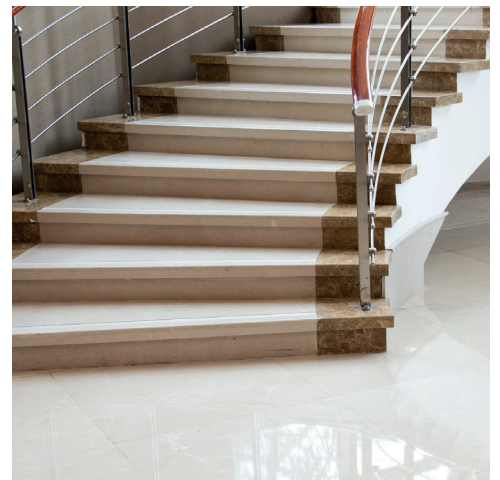


SURFACES

Cement, stone, brick, concrete, concrete structures, cement mortars.
Surfaces should be healthy, dry, cohesive, absorbent, clean and free of dust.

CHARACTERISTICS

- Excellent workability.
- Thixotropic and does not drip.
- Easy to mix.
- Available in white and grey.
- Great finesse.
- Standard setting product.
- Reduced slippage.
- Suitable for tiling swimming pools.
- Extended open time
- Good resistance to humidity.
- Good adhesion.



IDEAL FOR

- Covering with porcelain stoneware tiles to indoor walls (cladding) and indoor or outdoor floors (paving).
- Tiling of swimming pools.

CX-25

Colbaix®

PORCELANIC

ON-SITE APPLICATION

SURFACE PREPARATION

The surface should be healthy, clean, consistent, free of humidity and free of any trace of saltpetre, fungus, micro-organisms, dust, grease or whatever other material that could prevent the good adherence of the product itself.

CLEANING

If surfaces present traces of fungi, algae or other type of microorganisms, we first proceed to curative treatment with our **RX-524 CLEAN MICRO**. Apply the product to the surface to be treated. After 5-10 minutes of action, clean the surface using a pressurised water machine or with a hard bristle brush. Then, once the surface is completely dry, **RX-524 CLEAN MICRO** should be applied until the surface is completely impregnated. This preventive treatment is very effective and prevents future presence of microorganisms.

If there are saltpetre stains on the surface to be treated, carry out an initial cleaning process with our **RX-523 CLEAN SAL**, applying the material and then scraping it with a hard bristle brush. After mechanically cleaning the surface, it will need to be rinsed with plenty of clean water in order to neutralise any **CLEAN SAL** residue that may remain on the surface.

Any grease or oil must be completely eliminated to allow the product to adhere correctly to the surface. Therefore, we recommend using **RX-527 CLEAN OIL** for correct and total elimination of these substances.

If the supports present cavities, they must be scraped and eliminated until reaching the consistent bottom. The consistent support is the one usually formed by brick, or cement, as long as it can support the weight and tension of the subsequent layers applied, without disintegrating or altering its structure.

DIRECTIONS FOR USE

Mix with clean water by hand or using a mixer, at the rate of 26% until you achieve a thick and homogeneous paste. For each kilo of powder add 260 g. of water. Let it rest for 2 - 3 minutes. Use a notched trowel to apply **CX-25** with pressure to ensure a good compaction of the material.

Firmly press to place the tiles on the fresh paste to ensure the complete contact with all of the surface. For the placing of tiles of more than 30x30, a double adhesive technique should be used.

TECHNICAL CHARACTERISTICS

PERFORMANCE

Simple adherence	4 - 5 Kg/m ²
Double adherence	8 - 10 Kg/m ²

DENSITY

Powder (g/ml)	1.34 ± 0.07
Paste (g/ml)	1.85 ± 0.07

CX-25

Colbaix®

PORCELANIC

TECHNICAL CHARACTERISTICS

Pot life	6 Hrs. approx.
Setting	9 - 10 Hrs.
Maximum granulometry	1000 μ
pH	12 - 14
Workability time (EN 12004-2)	30 minutes
Correcting time	10 - 20 minutes
Resting time after mixing	2 - 3 minutes
Colour of the product	White / Grey
Cleaning of tools	Use water immediately after use. Can only be cleaned mechanically once set.
Fire classification standard	A1

ADHERENCE (EN 12004-2)	
TRIAL	RESULTS
Initial adherence (28d)	$\geq 0,5$ MPa
Adherence after immersion in water	$\geq 0,5$ MPa
Adherence after thermal ageing.	$\geq 0,5$ MPa
Adherence after frost/thaw cycles.	$\geq 0,5$ MPa

INFORMATION OF INTEREST

The manufacturing process is controlled in batches, which allows traceability in the case of any incident. The quality control system used includes, the individual design and development of each article, both with the raw materials used confirming manufacturing uniformity, as well as the final product obtained. The use in our facilities of eco-technology in the manufacturing process allows the completion of environmentally friendly efficient work.

- Non-flammable product. Irritant.
- Avoid contact with eyes and skin.
- Smoking, eating or drinking in the area of use is prohibited.
- Comply with Health and Safety at Work Executive regulations.
- Store the product in a dry place, in its original packaging firmly closed and free from humidity.
- Store the containers between 5°C and 35°C.
- Recommended storage time: 6 months as from date of manufacture, closed in its original packing and away from humidity.

Further information relative to protection measures and first aid, check Product Safety Sheet.

CX-25

Colbaix®

PORCELANIC

OBSERVATIONS

- The reading of this product's data sheet is indispensable for the correct use and application.
- The data provided in this data sheet are for guidance only and should not be considered binding. The data has been obtained in normal laboratory conditions and on standardised surfaces, and can vary depending on the conditions in which they are applied (absorption of the surface, applied thickness, temperature, environmental humidity, etc.). The intervals displayed have been shaped by measurement history. Slight deviations from the ranges presented in this technical sheet, whether higher or lower, will be accepted according to internal technical criteria and will not result in a loss of quality or affect the performance of the final product, due, among other factors, to variations in measurement conditions and the uncertainty associated with the instruments used.
- Work conditions of the user are out of our control.
- The product should not be utilized for other uses except the ones indicated. It is advisable to follow strictly the recommendations of use given.
- A previous inspection of the state of the surface before use is fundamental. Do not apply on dirty surfaces or ones with no cohesion.
- Use the product within its lifetime. Unfavourable properties can be obtained once this time is exceeded. Do not re-mix.
- Do not use outdoors in icy temperatures or days that forecasts rain.
- Do not apply on extremely crystalline surfaces.
- Do not apply on paint, wood or gypsum.
- It will lose its technical features if mixed with any other material. Do not add more than the recommended amount of water.
- Do not apply in temperatures under 5°C or over 35°C.
- Do not add cement, sand or any other substance that could affect the material's qualities.
- **ESTABLECIMIENTOS BAIXENS'** technical department informs that the new designs in the development of recent launches are considered in their experimental phase until an annual revision is made. From this point on, the product of a recent launch is considered as being totally consolidated in the market. In the meantime, **ESTABLECIMIENTOS BAIXENS** reserves its right to adapt the variable specifications or ranges of work, according to technical criteria. The information subject to modification, will be identified with an asterisk at the top for easy recognition of those products which are the subject of new creation or are subject to an experimental phase or improvement in our different ranges because of market demand and or needs.
- We have a technical-sales team at your disposal for technical advice or consultation.

PACKAGING

FORMAT	25 kg		<table border="1"> <tr> <td>Internal code</td> <td>CX25NF665A20</td> </tr> </table>	Internal code	CX25NF665A20
Internal code	CX25NF665A20				
UNITS/CASE					
PALLETS	48 ud				



Testing the difference

BAIXENS ESPAÑA
POL. IND. MONCARRA, S/N
46230 ALGINET (VALENCIA)
T.: 961.750.834
F.: 961.752.471

BAIXENS FRANCE
14, RUE DU PONT NEUF
75001 PARIS (FRANCE)
T.: 0.800.90.14.37
F.: 0.800.90.20.52

BAIXENS ITALIA / BULOVA
VIA PIETRO NENNI, 36
46019 CIGOGNARA - MANTOVA (ITALY)
T.: 0375/88181/790016 F.: 0375/88831
www.bulova-pennelli.com

BAIXENS PORTUGAL / ARGATINTAS
AVENIDA PORTAS DO MINHO, Nº 711
4760 - 706 RIBEIRÃO,
V.N. FAMALICÃO
T.: 252 910 030
www.argatintas.pt